



 **BORA**

**BORA Professional 2.0**  
sets

## BORA Professional 2.0 – now available in a set

Functional aesthetics, innovative efficiency, extra-deep dimensions and best performance

- The latest motor technology, low-noise EC motors
- Maximum storage space in the floor unit through a low appliance height of only 199 mm
- Compact unit with integrated fan enables floating worktops and low plinth heights
- Extra-deep 54 cm cooktops provide space for two very large pots or pans to sit one behind the other
- Large flat 230 x 460 mm induction cooking zones (PKASFI and PKASFIT set)
- Powerful tepan cooktop with precise temperature regulation, cleaning function and optimum heat distribution through micanite surface heating elements (PKASFIT set)
- Automatic-opening electric cover flap with integrated sensor
- Intelligent control knob with integrated function programmes and digital display
- Stainless steel grease filter in proven BORA quality materials, dishwasher-safe
- Can be surface-mounted or flush-mounted
- Suitable for recirculation or exhaust mode
- **Recirculation:**  
can be combined with BORA ULB1 or ULB3 air purification box
- **Exhaust air:**  
can be combined with the BORA Ecotube duct system and the BORA 3box wall sleeves



Above: BORA surface induction with flexible cooking zones

Left: BORA products are impressively easy to clean and maintain. Removable components, such as the cover flap, grease filter and filter tank are dishwasher safe



BORA Professional 2.0 has received multiple awards. In 2017, it won the Red Dot Design Award and the Plus X Award. In 2018, it won the German Design Award Gold and the Good Design Award – Chicago Athenaeum: Museum for Architecture and Design.

# Components of the BORA Professional 2.0 sets

The BORA Professional 2.0 sets – cooktop extractor system with two cooktops

BENEFITS TO YOU: one order number, one price.

Further individual planning for recirculation or exhaust air:

- **Recirculation:** with ULB1 or ULB3
- **Exhaust air:** with BORA Ecotube (see page 8/9)



BORA Professional 2.0 Cooktop 1

+

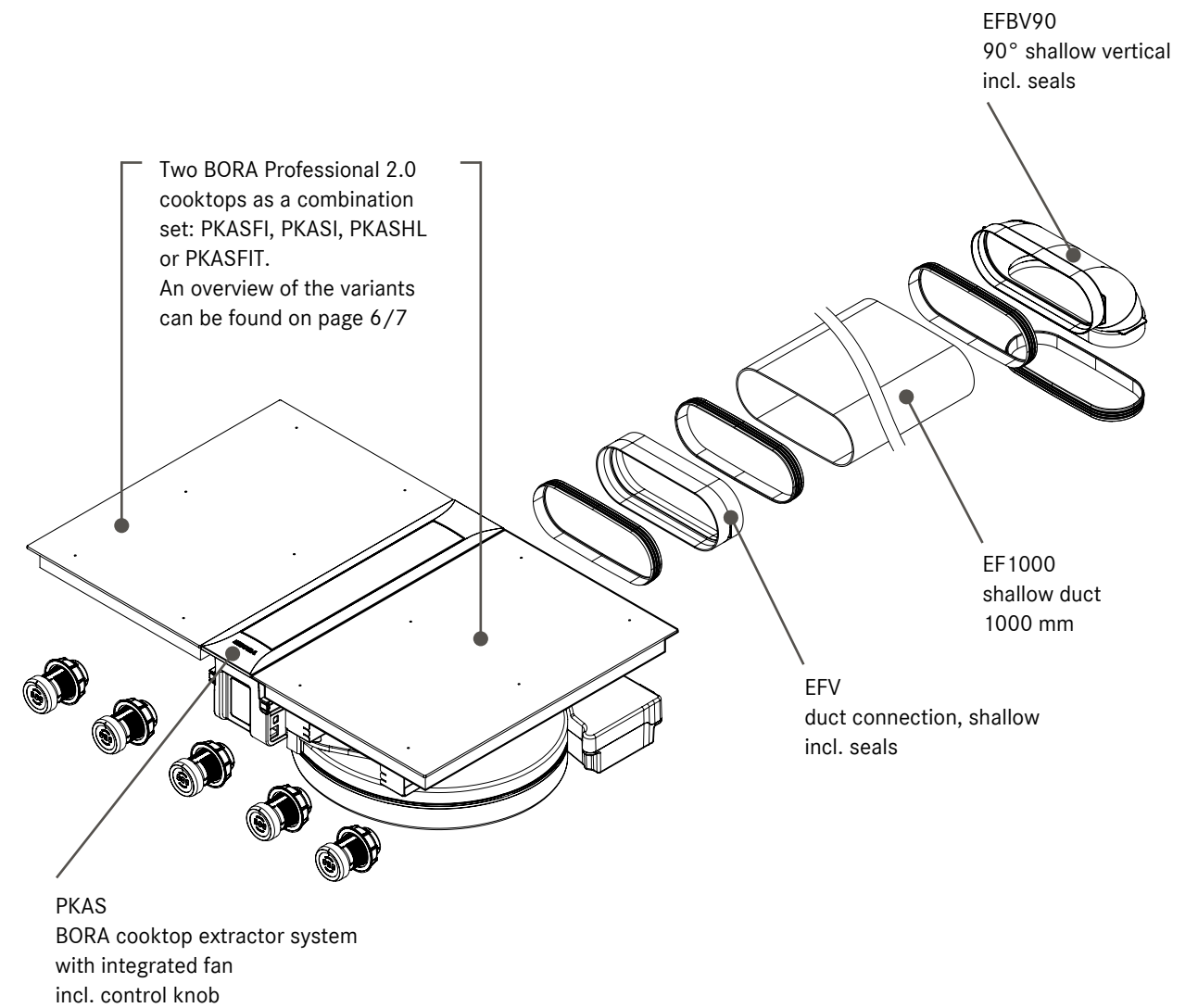


BORA Professional 2.0 (PKAS) Cooktop extractor system

+



BORA Professional 2.0 Cooktop 2



## BORA Planning Service

Planning information, such as cut-out sizes, model plans and installation cut-outs, can be found in the BORA ventilation handbook and at [www.bora.com](http://www.bora.com) in the PartnerNet.

We will support you in planning our BORA Professional 2.0 series. If you have any questions, please contact our planning team:

planung@bora.com  
T +49 80 35 98 40-140

# BORA Professional 2.0 set variants



## PKASFI – BORA Professional 2.0 set surface induction



BORA surface induction glass ceramic cooktops with 2 cooking zones each

**PKASFI consisting of:**

- **1 x PKAS:** BORA Professional 2.0 cooktop extractor system
- **2 x PKFI11:** BORA Professional 2.0 service induction glass ceramic cooktops with 2 cooking zones each
- **1 x EFV:** BORA Ecotube duct connection, shallow
- **1 x EF1000:** BORA Ecotube shallow duct 1000 mm
- **1 x EFBV90:** BORA Ecotube corner 90° shallow vertical



## PKASHL – BORA Professional 2.0 set HiLight glass ceramic



BORA HiLight glass ceramic cooktops with 2 cooking zones each

**PKASHL consisting of:**

- **1 x PKAS:** BORA Professional 2.0 cooktop extractor system
- **1 x PKC32:** BORA Professional 2.0 HiLight glass ceramic cooktop with 2 cooking zones (3 ring/2 ring)
- **1 x PKC3B:** BORA Professional 2.0 HiLight glass ceramic cooktop with 2 cooking zones (3 ring/roaster cooking zone)
- **1 x EFV:** BORA Ecotube duct connection, shallow
- **1 x EF1000:** BORA Ecotube shallow duct 1000 mm
- **1 x EFBV90:** BORA Ecotube corner 90° shallow vertical



## PKASI – BORA Professional 2.0 set induction



BORA induction glass ceramic cooktops with 2 cooking zones each

**PKASI consisting of:**

- **1 x PKAS:** BORA Professional 2.0 cooktop extractor system
- **2 x PKI11:** BORA Professional 2.0 induction glass ceramic cooktops with 2 cooking zones each
- **1 x EFV:** BORA Ecotube duct connection, shallow
- **1 x EF1000:** BORA Ecotube shallow duct 1000 mm
- **1 x EFBV90:** BORA Ecotube corner 90° shallow vertical



## PKASFIT – BORA Professional 2.0 set surface induction, tepan



BORA surface induction glass ceramic cooktop and BORA tepan stainless steel grill with 2 cooking zones each

**PKASFIT consisting of:**

- **1 x PKAS:** BORA Professional 2.0 cooktop extractor system
- **1 x PKFI11:** BORA Professional 2.0 surface induction glass ceramic cooktops with 2 cooking zones
- **1 x PKT11:** BORA Professional 2.0 tepan stainless steel grill with 2 cooking zones
- **1 x EFV:** BORA Ecotube duct connection, shallow
- **1 x EF1000:** BORA Ecotube shallow duct 1000 mm
- **1 x EFBV90:** BORA Ecotube corner 90° shallow vertical



# Installation examples

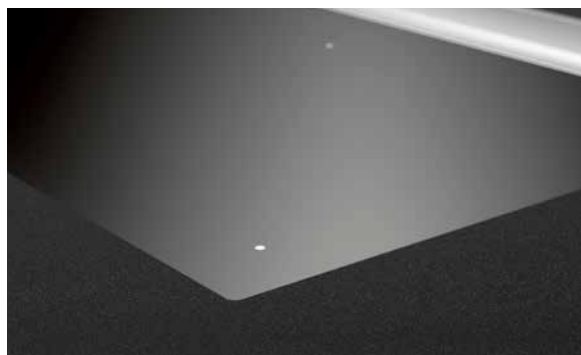


Installation example with recirculation



Installation example with exhaust air

# Installation variants



Flush installation



Surface mounting

# Accessories for recirculation mode

## BORA air purification boxes

Powerful filters for your recirculation system



**ULB1**  
BORA air purification box



**ULB3**  
BORA air purification box  
with 3 activated charcoal filters

Further information on BORA products can be found in the BORA ventilation handbook and at [www.bora.com](http://www.bora.com) in the PartnerNet.

# Accessories for exhaust mode

## BORA Ecotube and 3box

Duct system



**ER1000**  
Round duct  
1000 mm



**EF1000**  
Shallow duct  
1000 mm



**ERB90\***  
Corner 90° round



**EFBH90\***  
Corner 90°  
shallow horizontal



**EFR90\***  
Transition 90°  
shallow round



**EFBV90\***  
Corner 90°  
shallow vertical



**EFRG\***  
Transition  
shallow round straight



**EFRV\***  
Transition  
shallow round offset



**ERV\***  
Duct connection  
round



**EFV\***  
Duct connection  
shallow



**EFMS**  
Mounting bracket set



**EFBH15\***  
Corner 15°  
shallow horizontal



**EF47**  
Shallow duct 47 mm



**EFD**  
Seal shallow



**ERD**  
Seal round



**ERMS**  
Installation set round



**UEBF\***  
BORA 3box  
wall sleeve

\*incl. seals

## BORA sockets

Available in 5 country-specific variants



**USTF**  
BORA socket (type F)  
Countries: DE/AT/NL/  
ES/IT/LU/PT/RU/BR/SE



**USTE**  
BORA socket (type E)  
Countries: FR/PL/DK/  
BE/CZ/SK



**USTJ**  
BORA socket (type J)  
Countries: CH/LI



**USTG**  
BORA socket (type G)  
Countries: UK/AE/SG



**USTL**  
BORA socket (type L)  
Countries: IT/SL

## BORA Professional 2.0 accessories



**PKA1FF**  
BORA Professional 2.0  
stainless steel grease filter



**UGPC1**  
BORA grill pan, Ceran

**UGPI1**  
BORA grill pan, induction



**PTTS1**  
BORA tepan scraper



**UGS**  
BORA glass ceramic scraper



Above: BORA Professional 2.0 features effective extraction performance and offers the largest cooktops in the entire domestic appliance market. Two large pans can be placed behind one another on each cooktop.

Right: Convenient connection of domestic appliances using handily placed sockets.





BORA Vertriebs GmbH & Co KG  
Prof. -Dr. -Anton-Kathrein-Straße 3  
A-6342 Niederndorf  
T +43 (0) 53 73 6 22 50 - 0  
info@bora.com  
www.bora.com

EN